

Personal Preparedness Recommendations

If you or someone in your family has a special healthcare need, remember to take it into consideration when preparing your emergency supply kit. If you take medication or use a medical treatment on a regular basis, be sure you have what you need to care for yourself for at least three days.

Some common items that you should consider having in your home include extra:

- eyeglasses
- hearing aids and hearing aid batteries
- wheelchair batteries
- oxygen

Other things to collect and keep handy include:

- a list of prescriptions, including dosage and treatment
- a list of allergies
- copies of your health insurance card(s)
- contact information for your doctors, pharmacist, and medical supply providers

If you have a service animal, be sure to include:

- food and water
- collar with ID tag
- proof of rabies vaccination
- other emergency pet supplies



The Rhode Island Department of Health (RIDOH) and the Rhode Island Emergency Management Agency (RIEMA) have developed this registry as a service to Rhode Islanders with chronic conditions, disabilities, and special healthcare needs.

**For more information, visit
www.health.ri.gov/emregistry or call
401-222-5960 / RI Relay 711**

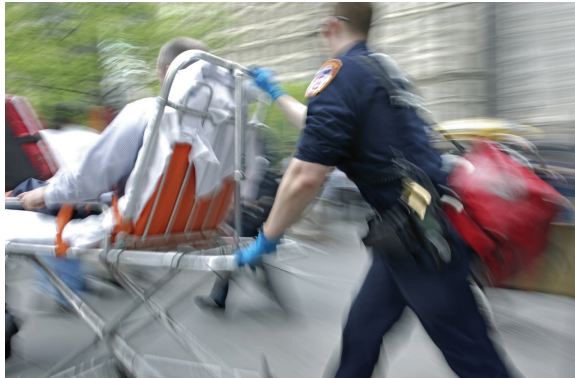


Rhode Island Special Needs Emergency Registry

A SYSTEM TO IDENTIFY RHODE ISLANDERS WHO
MAY REQUIRE ASSISTANCE DURING EMERGENCIES



The Rhode Island Department of Health (RIDOH) and the Rhode Island Emergency Management Agency (RIEMA) have developed this registry as a service to Rhode Islanders with chronic conditions, disabilities, and other special healthcare needs.



The Rhode Island Special Needs Emergency Registry is a system for the identification of Rhode Islanders who may require assistance during emergencies.

Some examples of people who might enroll in the Registry include those who:

- Use life support systems such as oxygen, dialysis, a respirator, ventilator, pacemaker, or are insulin dependent
- Have mobility disabilities and use a wheelchair, scooter, walker, cane, or other mobility device
- Are visually impaired, blind, hard of hearing, or Deaf
- Have speech, cognitive, developmental, or mental health disabilities
- Use a service animal

Easy enrollment process

The enrollment form can be completed online or it can be submitted by mail.

Online

1. Visit www.health.ri.gov/emregistry
2. Click the “Enroll Now” button

By mail

1. Visit www.health.ri.gov/emregistry and print the form or call 401-222-5960 / RI Relay 711 to request that one be mailed to you
2. Mail completed enrollment form to:
RI Department of Health - RISNER
3 Capitol Hill - Lower Level
Providence, RI 02908

Updating your information

RIDOH will send letters with enrollment forms to all Registry enrollees once a year to request updated information. Enrollees can also update their information at any time by completing an enrollment form online or by downloading a paper form and submitting it by mail.



HOW YOUR INFORMATION IS USED: Help us help you by completing a Registry enrollment form for yourself or any member of your household who may require assistance during emergencies. The information provided will be shared with state and local emergency responders, such as your town/city emergency management, police, ambulance, and fire departments.

Enrollment in the Registry does not guarantee assistance, but allows first responders to appropriately plan for, prepare for, and respond to the needs of the community.

You may request the Registry enrollment form in languages other than English by calling 401-222-5960.